



OWNERS
MANUAL

**MBM FC 10
JAM DETECTOR
115V
Product Code 460-2126**

Installation

1. Install jam sensor in bookletmaker per sketch SK881G.
2. Make electrical connections per sketch SK881K2.

Operation

1. If the collator detects a jam or misfeed, it stops feeding, and the bookletmaker is shut off.
2. A timer measures how long the jam sensor, mounted to the bookletmaker, "sees" each booklet in the stitching position. If the booklet fails to move to the folding position, the bookletmaker is shut off, and the collator stops feeding.
3. If the trimmer senses a jam, it shuts off, and sends a signal to the jam detector box. The jam detector box then shuts off the bookletmaker and collator.

Timer Adjustment

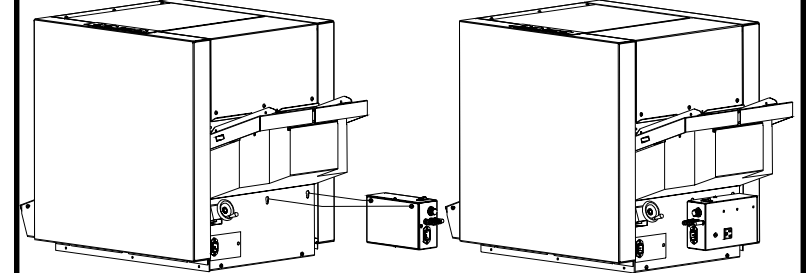
1. Turn timer knob full left (counterclockwise). Next, turn timer knob clockwise approximately 45 degrees.
2. Operate collator/bookletmaker portion of system. If the jam detector shuts off the bookletmaker when there is no jam, turn the timer knob slightly clockwise.
3. If it takes more than two sets in the stitching position to trigger a jam signal, turn the timer knob slightly counterclockwise.

MBM FC 10 JAM DETECTOR SYSTEM DIAGRAM

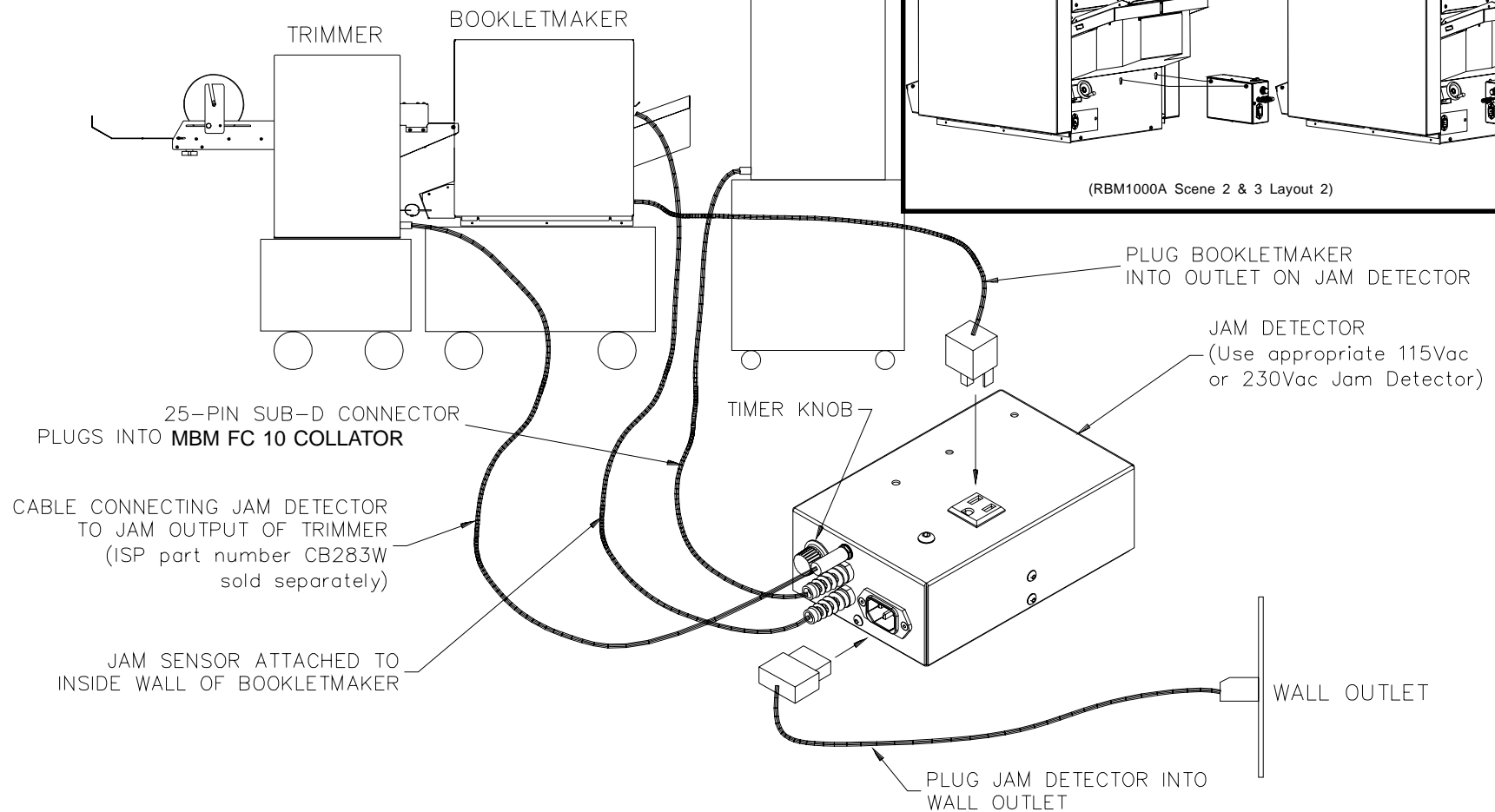
MBM FC 10 Collator

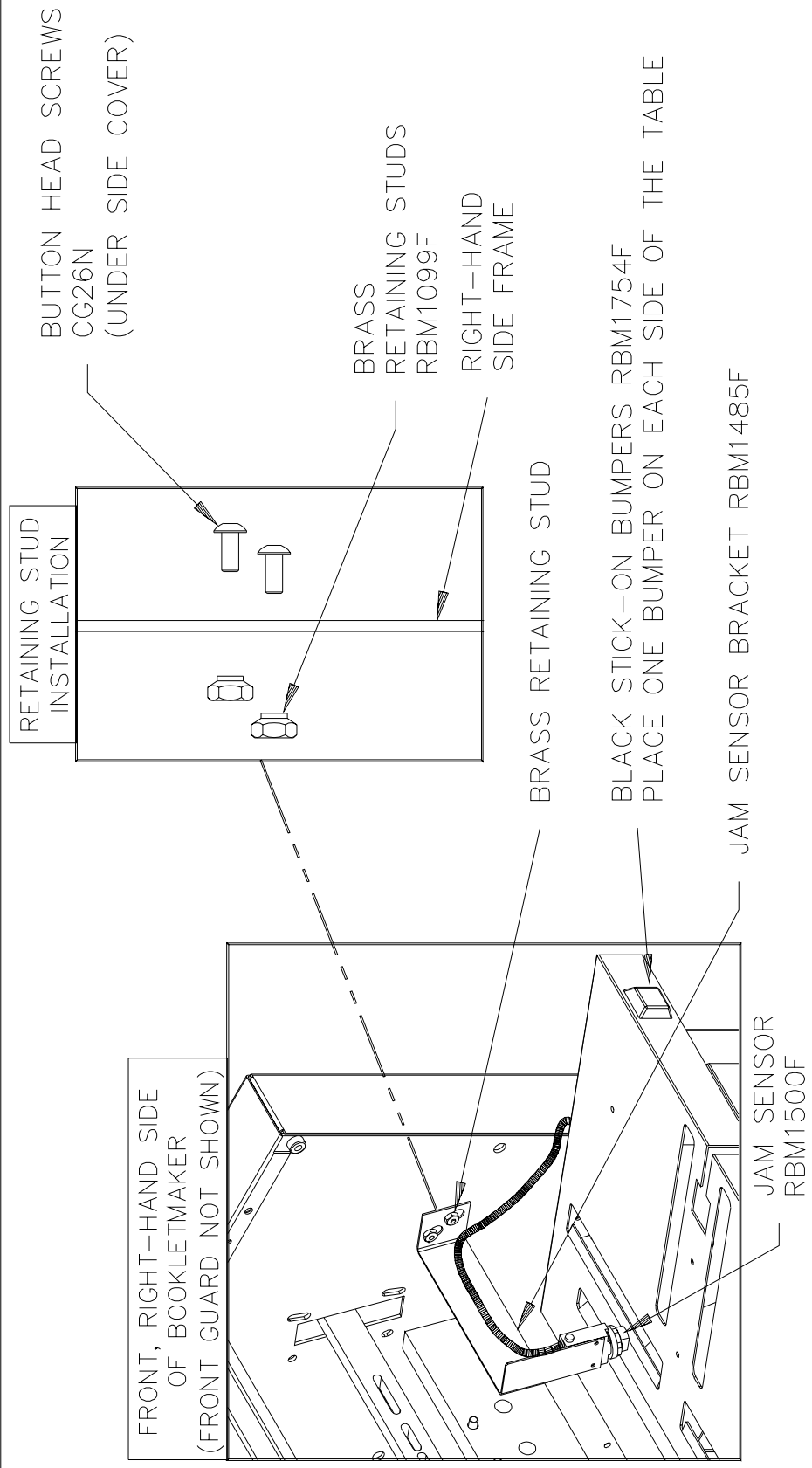
Hang jam detector box on B2000

(See page 9 to put slotted holes in front cover of earlier version machines)

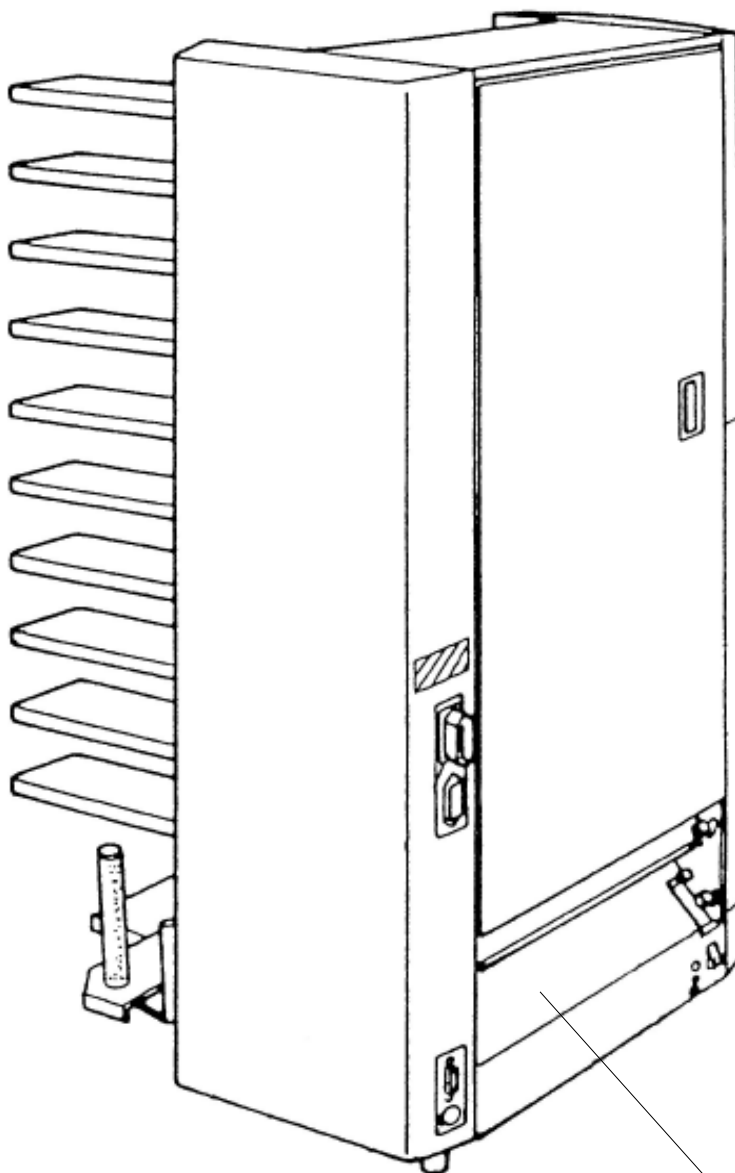


(RBM1000A Scene 2 & 3 Layout 2)





COLLATOR INSTALLATION, SK881S



Install Alignment Sticker, RBM1755F, on this surface. —
Adjust the bookletmaker for a common paper size, and align the bookletmaker with the collator. Place a black arrow shaped sticker on the collator even with the bookletmaker's side guide. Repeat for other common paper sizes.



3134 Industry Dr. N. Charleston, SC 29418
1-800-223-2508 1-843-552-2700
Fax: 1-843-552-2974
www.mbmcorp.com